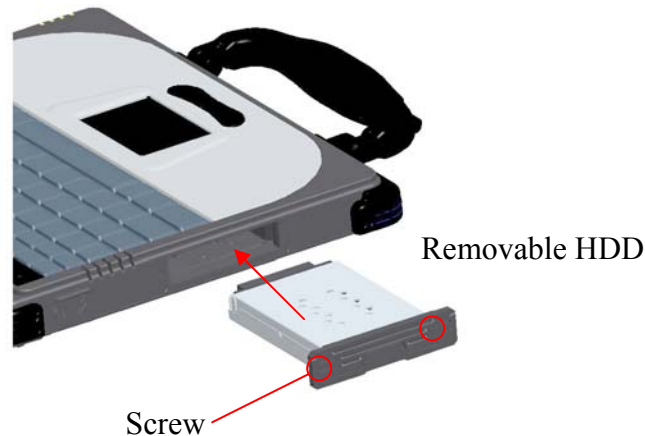


## Remove HDD Instruction for W130

### Removable HDD Instruction

#### Uninstall Removable HDD Steps

1. Make sure unit is POWER OFF before swap removable HDD
2. Unscrew two screws on door of removable HDD case totally
3. Pull up handle of removable HDD case door
4. Pull out removable HDD case horizontally



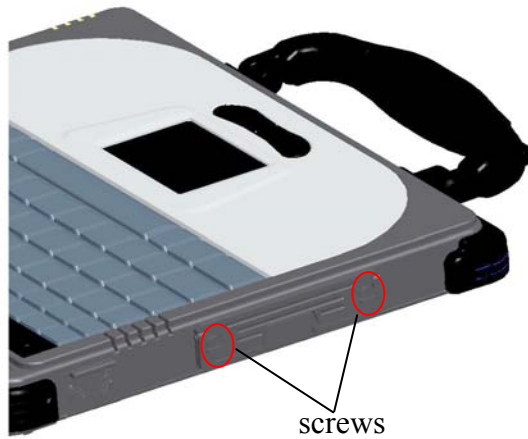
#### NOTE

1. This removable HDD is NOT hot swapped. Swap removable HDD during POWER ON may cause removable HDD damaged
2. Removable HDD case is suggested CANNOT be opened. Warranty will be void if label on removable HDD case is damaged or removed
3. Removable HDD design uses special design (1.8" HDD), so removable HDD module is suggested not to be purchased from any other vendor

## Remove HDD Instruction for W130

Install Removable HDD Steps:

1. Make sure handle is on lower side before removable HDD is installed into the unit
2. Push removable HDD horizontally into the unit completely
3. Screw two screws into door of removable HDD case totally



NOTE:

1. Door of removable HDD CAN NOT be installed upside down. Wrong direction installation will cause removable HDD module damaged
2. If removable HDD case is not pushed into the unit completely, removable HDD CAN NOT be detected and screwed