

**Complete physical video solutions from IP cameras to analog**

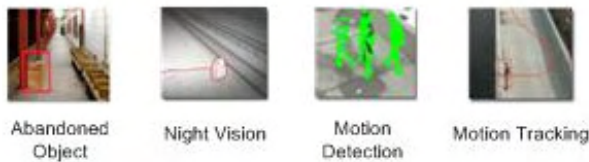
**IP and Analog Cameras**



**Security and IT Systems**



**Content Analytics and Video Intelligence**



**RoboSPY** Security Solutions bring network security, information management and storage, video surveillance, and analysis to your agency or department. The Physical Security Solutions enable you to manage, archive, protect, authenticate, and scale your security systems and video surveillance information more effectively, increasing your capacity to detect, deter, and analyze security events in real time.

RoboSPY enables you to remotely view and record live video from anywhere in the world that is based on open standards. Either IP cameras or analog cameras wired or wireless can be used day / night or indoors / outdoors. Having a military background the cameras can be vandal protected, covert, mobile or PTZ. The RoboSPY solution provides the entire family of needs for securing the safety of people and places or remotely monitors property and facilities.

**DETECT, DETER AND ANALYZE**



Video Management Software



Video Analytics



Covert Camera

**DuraTech USA Inc.**  
**A Certified 8(a), SDB, DBE, SBE, MBE, WBE firm.**  
**Phone: (714) 898-2171 Fax: 866-704-9132**  
**Email: [sales@DuraTechUSA.com](mailto:sales@DuraTechUSA.com) [www.DuraTechUSA.com](http://www.DuraTechUSA.com)**

## RoboSPY Covert Cameras

The **RoboSPY** covert cameras are ready to use covert IP camera that transmits video over broadband network. The enclosure includes everything other than broadband service.

The units utilizes a non ground plane antenna, power supply, and cooling fans that have been in use in Arizona for over 3 years.



PTZ covert camera ▶



### RoboBOX

The RoboBOX covert camera comes with a test power cord; hardwire cord, and luminaries tap.

The unit is easily mounted on wooden power poles, metal power poles, or street luminaries (street light). The unit can be mounted anywhere that has power and that has broadband service.

The covert camera can be hardwired into power, plugged into an ac outlet or power from the dusk to dawn sensor on a street luminary utilizing the included luminaries tap.

### Specifications

|                   |   |
|-------------------|---|
| Housing:          | NEMA enclosure that measures 16"x14"x6" |
| Camera:           | Sony RZ50 or Axis 214                   |
| Broadband router: | Helix, Junxion box or Raven x           |

### Options

The housing can also have the option of a mesh radio, DSL or broadband modem.

### RoboLUM

The RoboLUM covert camera is built into a standard street luminaries (street light). The photo cell is removed and a PTZ Day / Night camera is put into it place.

The unit is connects to power and the light pole the same way any street luminary would be mounted.

The entire solution and be built to the design of most any standard street luminary or it can be adapted to your existing street luminary.

### Specifications

|                   |                           |
|-------------------|---------------------------|
| Housing:          | Any Street Light Luminary |
| Camera:           | Axis 213                  |
| Broadband Router: | Raxen xe                  |

### Options

The housing can also have the option of mesh radio, DSL or broadband modem.

**DuraTech USA Inc.**  
**A Certified 8(a), SDB, DBE, SBE, MBE, WBE firm.**  
**Phone: (714) 898-2171 Fax: 866-704-9132**  
**Email: [sales@DuraTechUSA.com](mailto:sales@DuraTechUSA.com) [www.DuraTechUSA.com](http://www.DuraTechUSA.com)**