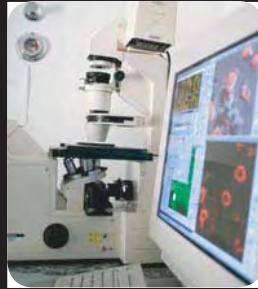


• **Drop Proof**



• **Shock Proof**



• **Spill Proof**

• **Dust Proof**

• **Hot Swappable
Battery**

A notebook tough enough to survive under real world conditions



Light enough to carry everywhere, tough enough to go anywhere and packed with Get-the-job-done power, the Gammatech RT10 is ready to go to work under the most adverse conditions - indoors or out .



RT10

Fully Rugged Tablet PC

RT10

Tough Features	
Drop Resistance	26 drops of 91cm to plywood over concrete with unit on 2 units to pass. MIL-STD-810F 516.5, Procedure IV
Shock Resistance	Non-Operating SINE WAVE Vibration: 6Hz~500Hz 2.62Grms, 30mins/axis, 3axes, 30 minutes per axis Operating Random Vibration:Power Spectral Density ranges = 0.00001 to 0.01 G ² /Hz, Frequency ranges = 1 to 200Hz. Overall GRMS = 0.52. 90 minutes in all three axes, 270 minutes total. Unit is operating, and disk accessing.
Spill Resistance	IEC 60529, IPX4 MIL-STD-810F 506.4, Procedure II
Dust Resistance	International Standard IEC 60529, IP5X
System Specifications	
Processor	Intel® Ultra Low Voltage U2100 1.06GHz
System Memory	SO-DIMM 2GB 667Mhz
Storage	1.8" 60GB Hard Disk Drive With G sensor to support "park" function during free fall
Display	10.4" XGA (1024x768) TFT LCD Luminance: 240 nits , LED Backlight, Anti-glare glass Automatically orient to Landscape/ Portrait mode (0° - 90° - 180° - 270°) Automatically adjust LCD brightness to environmental lighting(Battery mode)
	Intel® 945GME Integrated Graphics
Audio	1 Watt single speaker with water proof membrane Two microphone support MIC array
Chipset	Intel® 945GME
Webcam	2 mega pixels resolution webcam
I/O Ports	• 1 x Docking Connector
On-Screen Keyboard	74 keys input panel with dedicated Windows® Key
Hot Keys	1.Suspend / power on-off 2. Bluetooth on-off 3.Camera Capture 4. Function on-off 5. Five Ways Navigation Key 6. Three user Programmable keys
Wireless/Communications	Wireless LAN 802.11 a/g/n Support Cisco Compatible Extensions Bluetooth 2.1 and Support Enhanced Data Rate (EDR) 3G Module for WWAN(Factory option)
Power Supply	AC/DC Adapter : Input:AC100V-240V,47Hz-63Hz Output: DC 20V, 3.25A , 65 Watt Battery pack: Hot Swappable twin battery packs(total 53.28Watt)
Temperature	Operating Environment Temperature: 41°F~95°F Storage Environment Temperature: -4°F~140°F
	Operating Humidity: 10% ~ 90%
Security	TPM1.2 (Trusted Platform Module Security Chip) BIOS setup, Power-on, HDD User Password Protection Fingerprint Recognition, Kensington Lock
Integrated options	RFID reader : Support ISO1443A, ISO1443B and ISO15693 1D/2D Barcode Scanner : UART Interface
	Microsoft Windows® XP Tablet Edition Microsoft Windows Vista® Business Microsoft Windows® 7 professional
Dimensions & Weight	270mm(W) x 256mm(D) x 356mm(H) / 10.6"(W) x 10"(D) x 1.38"(H) Approximately 1.3Kg / 2.86lbs with one battery pack & 3G module installed
Certification	FCC class B, CSA, CE, CB
	Host slot x1, USB 2.0 x 4, Power cord connector x 1, Battery charging bay x 2 RJ-45 jack for 10/100M Ethernet LAN x 1