

FLEET COMPLETE[®]

Reliable fleet management solution for ambulatory fleets

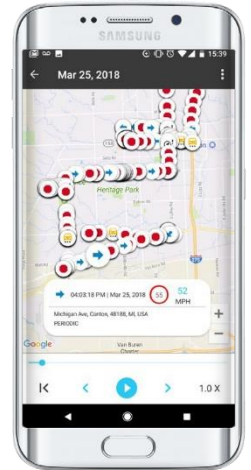
Immediate response and on-demand action to an emergency call are critical competencies when it comes to paramedic teams. Intense training and quick thinking on their feet makes emergency response units very effective at their jobs. Fleet Complete provides an integrated telematics solution that uses multi-sensor in-vehicle system to capture and log actions in the field, such as driver behavior on the road, locating and dispatching the closest unit, the time and place a dispatch call was received, the time it took to arrive onsite, status of emergency lights and sirens, engagement of vehicle's auxiliary equipment, and more.

- GPS Fleet Tracker MGS800:**
Captures vehicle location, engine hours, fuel consumption and data from additional sensors
- Front/back door and stop sensors:**
Logs the time and location the door is opened and closed
- Lights and sirens sensor:**
Captures when the lights and sirens are engaged throughout the trip
- Equipment trackers:**
Notifies if any medical equipment is left behind, or has been dropped or shifted during transportation
- Personal trackers:**
Sends alerts to head-office of a field agent being unresponsive or experiencing a fall or an impact
- Bi-directional camera:**
Monitors and records GPS and time-stamped instances of aggressive driving behavior
- Driver Vehicle Inspection Report:**
Helps streamline Pre/Post-Trip inspections and logs reports for audits
- Enhanced Push-to-Talk:**
Instant communication with multiple drivers in the field from one screen

One integrated platform focused on ambulatory safety

Fleet Complete offers a custom, highly integrated fleet management solution that enables fleet managers and dispatchers to have access to such field intelligence as status of each driver, their vehicle, their location, equipment integrity, behavior on the roads, routing information, vehicle inspection and more, allowing them to make smart on-demand decisions and improve fleet safety and efficiency.

Fleet Complete solutions specifically designed for Ambulances and First Responder vehicles allow both fleet managers and drivers to be better equipped to ensure safe transportation to and from emergency locations and provide quality basic life support to patients in need.



Fleet Complete
Breadcrumb Trail report

Contact your local Fleet Complete expert for more information.

Type RSM contact info here



Track and manage your mission-critical fleet and workforce in near real-time



Monitor and minimize aggressive driver behavior when not on a call on the roads and help lower fleet running costs



Get insight into the status of your vehicles by monitoring Engine Control Module for check engine and Diagnostic Trouble Codes*



Schedule and track completion status of regular CPR training sessions and more



Prolong vehicle health and lifetime with automated maintenance management module



Capture regular inspections and log defects of on-board ambulatory equipment



Monitor and immediately respond to crew members in distress due to falls or sudden impacts



Report on accurate sensor use activity and have proof of siren and lights engagement during a dispatch call



Keep an accurate chronology log of the activity taken during the dispatch call

* Currently in development

Important Information

AT&T Fleet Complete ("Fleet Complete") as described herein is available to AT&T's qualified customers participating in AT&T's contract with NASPO ValuePoint. AT&T Fleet Complete is subject to the terms and conditions of the NASPO ValuePoint Agreement, and applicable Sales Information. For qualified customers on the NASPO ValuePoint Agreement: Any Additional Product Terms not allowable under applicable law will not apply, and the NASPO ValuePoint Agreement will control in the event of any material conflict between the NASPO ValuePoint Agreement and the Additional Product Terms. Pricing. Prices do not include taxes or other fees and are subject to change. Rates are not subject to any additional discounts under any AT&T discount plan. Additional credit and eligibility restrictions apply. Additional charges, terms, conditions and restrictions may apply. Offer and pricing subject to change without notice. AT&T privacy policy may be viewed at www.att.com/privacy.

08/28/2018

DuraTech USA Inc.
714-898-2171 O.C. County
562-424-5502 L.A. County
714 719-9496 Cell
FAX: 866-704-9132
Email: sales@DuraTechUSA.com
www.DuraTechUSA.com

FLEET COMPLETE

© 2018 AT&T Intellectual Property. All rights reserved. AT&T and the AT&T logo are trademarks of AT&T Intellectual Property. FirstNet, First Responder Network Authority, and FirstNet logo are registered trademarks and service marks of FirstNet, an independent authority within the U.S. Department of Commerce. All other marks are the property of their respective owners.