

## Product Overview

# SE-1 GPS Module for the 500SE Camera

**Description:** The SE-1 GPS Module fastens to the 500SE digital camera to provide an integrated all-in-one geo-imaging device. The module utilizes state-of-the-art components to provide optimal reception and accuracy in all outdoor environments.



### GPS

#### Specifications:

**Chipset**  
**Position Accuracy**  
**Channels**  
**Acquisition Time**  
*Hot Start*  
*Warm Start*  
*Cold Start*

**Antenna**  
**Internal**  
**External**

**Durability**  
**Approvals**

SiRF Star III WAAS/EGNOS enabled  
 1-5 meters, 2D RMS, WAAS enabled  
 20 channel all in view tracking

1 Second (average)  
 38 Second (average)  
 42 Second (average)

Serantel Active GeoHelix antenna  
 Patch antenna – via external antenna port

Drop resistant and Weatherproof  
 FCC - CE - VCCI

DuraTechUSA Inc.  
 6765 Westminster Ave #314 Westminster, CA 92683  
 Tel: 714-898-2171 Fax: 866-704-9132 Email: sales@DuraTechUSA.com www.DuraTechUSA.com

### Installation:

1) Remove Hot Shoe Spring by sliding out.



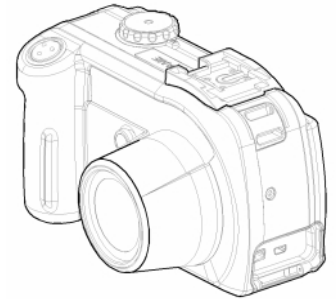
2) Remove Hot Shoe by unscrewing four screws



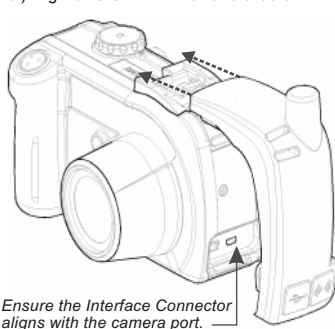
3) Attach Rail using the provided screws.



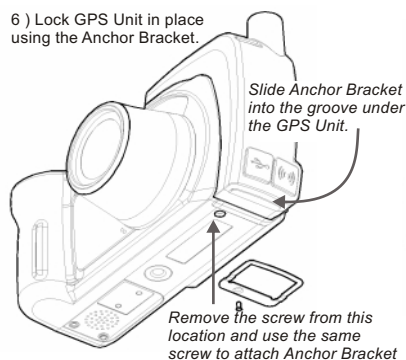
4) Camera with Rail attached.



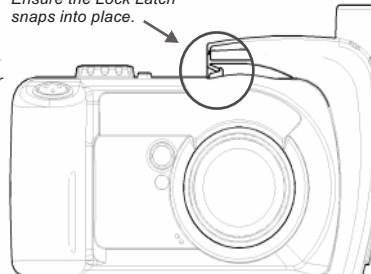
5) Align GPS Unit with Rail and slide on.



6) Lock GPS Unit in place using the Anchor Bracket.



Ensure the Lock Latch snaps into place.



Camera with GPS Unit attached.

