

Dear valued Customers,  
 I am pleased to be able to present to you advanced notification of a new module for the 500SE, the SE-2.  
 The SE-2 modules represent not only a significant enhancement to the capabilities of the 500SE but also reflects our commitment and determination to provide you the best-in-class geo-imaging solution. Over the years, you have provided us valuable input on the features you need. Ricoh and EKA Designs have listened. The feature-set of SE-2 is our response. Good luck.  
 - Jeff Lengyel



500SE with SE-2 module attached



**DuraTech USA, Inc.**  
 12792 Valley View Street, Suite 214  
 Call : (714) 898-2171 Fax: 866-704-9132  
[www.DuraTechUSA.com](http://www.DuraTechUSA.com) sales@DuraTechUSA.com

## SE-2 Overview

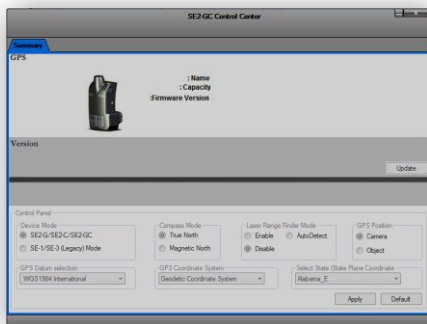


### Primary SE-2 Hardware Features:

- Like the SE-1 and SE-3 modules, the SE-2 will be available in two versions. The SE-2g (GPS only) and the SE-2c (GPS and compass). The SE-2 modules have a variety of features that represent significant improvements over the prior modules:
- Smaller form-factor, allowing for the camera's native hot shoe to remain in place.
  - Simplified module installation and removal process.
  - Superior shock reduction and weather resistance. (Waterproofing kits available)
  - Lower cost: SE-2g - \$169.00 MSRP. SE-2c - \$399.00 MSRP.
  - 30 percent lower power consumption.
  - Replaceable USB door covers.
  - Improved GPS performance. (40 channel vs 20 channel of the SE-1 / SE-3)
  - On-board track-log recording allowing for video to be mapped frame-by-frame\*.
  - Direct USB connection to PC for module firmware upgrades and diagnostics.
- \* video frame-by-frame mapping depending on WindImage or PhotoLink support

### Primary SE-2 Software Features:

- Advanced features in the SE-2 will become available via a firmware upgrade of 500SE on August 20th, 2009.
- User-defined compass magnetic declination adjustment to map north (SE-2c only).
  - User-defined GPS Datum support: NAD27, NAD83, and WGS84.
  - User-defined coordinate systems including state planes and decimal degrees.
  - Object coordinates displayed on LCD when using a rangefinder. (Cable required)
  - On-board mass storage allows module to be used as a flash drive.
  - Extremely fast GPS and compass update rates on camera LCD.



## SE-2 Technical Specifications



### SE-2 Module Major Specifications

Item	Description
<b>Channels:</b>	40 channels: all in view tracking SBAS enabled (WAAS/EGNOS/MSAS)
<b>Accuracy:</b>	1-5m, 2D RMS, WAAS enabled
<b>Acquisition Time:</b>	Hot start -1 sec. Warm start -38 sec. Cold start - 42 sec.
<b>Antenna internal:</b>	Active Geohelix Antenna
<b>External:</b>	Optional Patch antenna via MMCX port
<b>Compass:</b>	(SE-2g Only) 3 Axis Heading Accuracy*: At level +/- 3 degrees (on avg.)

\*Compass accuracy may vary based off environmental conditions and tilt.