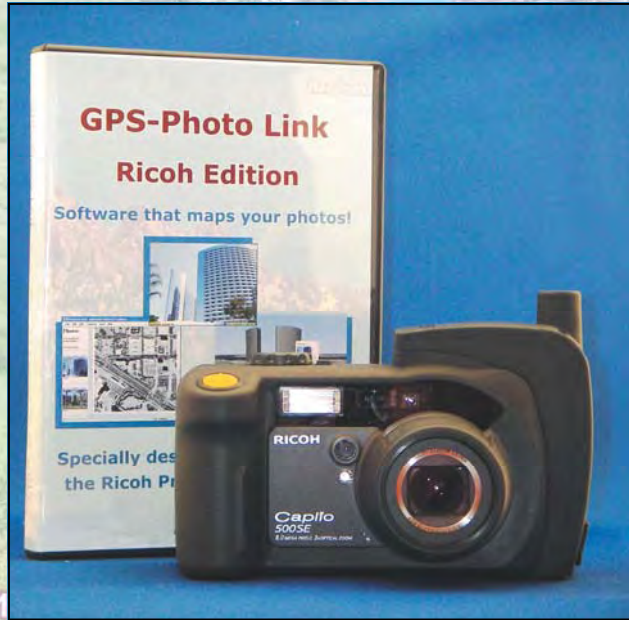


GPS-Photo Link Software

with the NEW
Ricoh 500SE GPS Camera

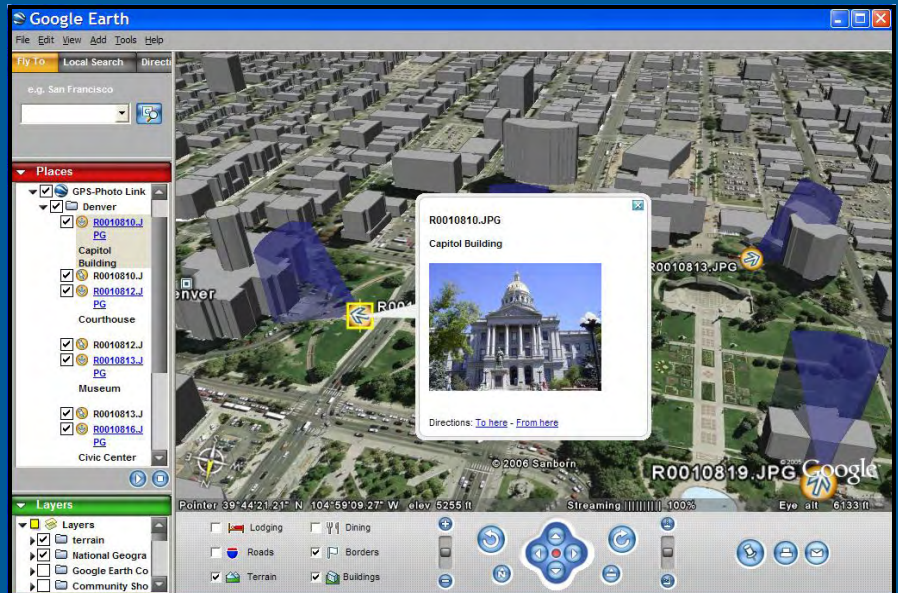


NOW...

PHOTO MAPPING

MADE SIMPLE

N 39° 05.894' W 106° 56.707'

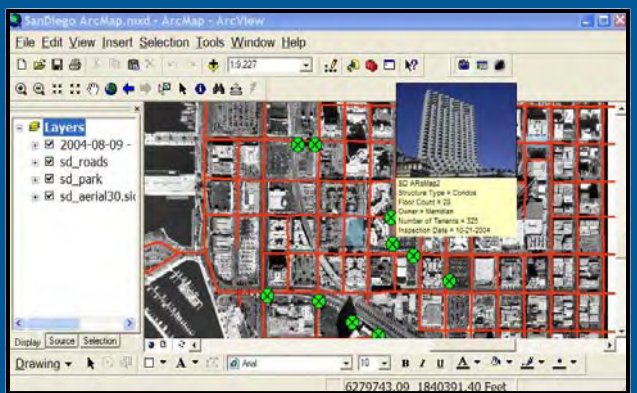


Google Earth Output with Thumbnail Photo

GPS-Photo Link: Ricoh Edition software creates:

- ArcGIS shape files
- Google Earth views
- GPS labeled photos
- Web pages

ArcGIS Extension



Order now!

DuraTech USA Inc. A certified 8(a), SDB, DBE, SBE, MBE, WBE firm.
 6765 Westminster Ave #314 Westminster, CA 92683
 Phone: (714) 898-2171 Fax: 866-704-9132
 Email: sales@DuraTechUSA.com www.DuraTechUSA.com

GPS-Photo Link: Ricoh Edition Features

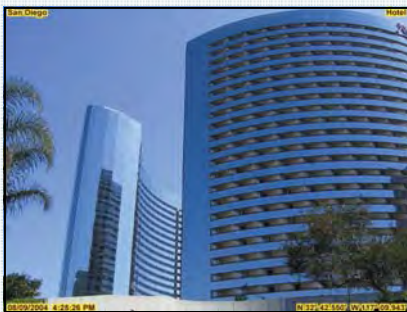
GeoSpatial Experts developed a customized version of GPS-Photo Link software to capitalize on the Ricoh Camera-GPS combination. With the GPS data and the images stored in the camera, all you have to do is download your photos and let **GPS-Photo Link** do the rest.

Software Features:

- Output ArcGIS Personal GeoDatabase or ESRI Shape Files.
- Use arrow symbol rotated to direction.
- 2d and 3d perspectives available in Google Earth & ArcGIS.
- Play recorded audio in extra data screen.
- Click on a point, and the photo will be displayed.
- Supports GPX files to use in Garmin's MapSource.

Ricoh 500SE Camera Features:

- **8.0 mega pixels** and **3x optical zoom**
- **Ruggedized, waterproof & shock resistant with image stabilization**
- **WAAS GPS module, Built in Bluetooth, optional WiFi**
- Native wide-angle 28 MM lenses (also accepts 37mm screw on lenses)
- The Ricoh camera can store 10 different **memos** or field notes for each picture taken. These memos can be used to name the photos so they are easy to find later. **Barcodes** can be scanned into memos.
- Connect the camera to a Bluetooth Laser Rangefinder, and the distance to the object can be recorded.
- Link AVI movies taken with the Ricoh camera.
- GPS Lock feature allows you to store the location of an object then walk back and take the picture.



Watermarked Photo



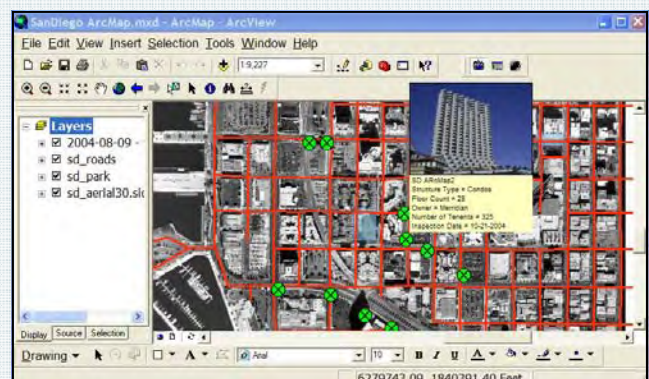
Website overview



Google Earth

ESRI ArcView 8. x & 9.x Features:

- GPS-Photo Link: Ricoh Edition allows you to process your photos with one click using our **ArcGIS Plug-in**.
- Output Personal GeoDatabase or Shapefiles.
- Output field of view layer based on field of view of camera, distance, and heading. Utilize a Wedge or Arrow symbol rotated to direction photo was taken.
- ESRI **ArcView extension** for hot linking images to shapefiles. Just click on the feature point, and the geo-referenced photo will be displayed! Hover over a point, and a thumbnail of the photo pops up!
- Display watermarked or original photo.



DuraTech USA Inc. A certified 8(a), SDB, DBE, SBE, MBE, WBE firm.

6765 Westminster Ave #314 Westminster, CA 92683

Phone: (714) 898-2171 Fax: 866-704-9132

Email: sales@DuraTechUSA.com www.DuraTechUSA.com

